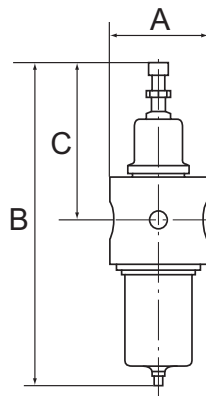
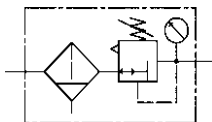


Stainless steel filter regulators with self-relieving (not for liquid media) for use in the chemical industry, mining, plant construction and special machinery industries, pneumatics, etc.  
Pressure setting by T-handle.

Max. input pressure	30 bar
Max. medium temperature	80 °C
Max. ambient temperature	60 °C
Housing	Stainless steel casting 1.4401 (AISI 316)
Sealant	NBR
Diaphragms	NBR/PTFE
Drain valve	Manual drain valve
Filter rating	25 µm
Flow rate measurement	At $P_1 = 10$ bar, $P_2 = 6$ bar and pressure drop $\Delta p \leq 1$ bar

Reversible, stainless steel filter regulator with self-relieving design, manual drain valve and stainless steel pressure gauge

Art. No.	Type No.	Thread	Control range bar	Flow rate l/min	A mm	B mm	C mm
137335	580FRC1-14-4	G 1/4	0.4 - 4	2095	62.0	227.0	115.0
137336	580FRC1-14-17	G 1/4	1.7 - 17.5	2095	62.0	227.0	115.0
137337	580FRC1-38-4	G 3/8	0.4 - 4	4420	62.0	227.0	115.0
137338	580FRC1-38-17	G 3/8	1.7 - 17.5	4420	62.0	227.0	115.0
137339	580FRC3-12-4	G 1/2	0.4 - 4	7850	82.0	233.0	121.0
137340	580FRC3-12-17	G 1/2	1.7 - 17.5	7850	82.0	233.0	121.0
137341	580FRC3-34-4	G 3/4	0.4 - 4	10055	82.0	233.0	121.0
137342	580FRC3-34-17	G 3/4	1.7 - 17.5	10055	82.0	233.0	121.0
137343	580FRC4-1-4	G 1	0.4 - 4	11330	120.0	301.0	136.0
137344	580FRC4-1-17	G 1	1.7 - 17.5	11330	120.0	301.0	136.0
137345	580FRC4-112-4	G 1 1/2	0.4 - 4	11330	120.0	301.0	136.0
137346	580FRC4-112-17	G 1 1/2	1.7 - 17.5	11330	120.0	301.0	136.0



580FRC3-12-4

**Accessories / spare parts for stainless steel filter regulator G 1/4 and G 3/8 (Size 1)**

Art. No.	Type No.	Description
102510	4083	Pressure gauge Ø 63 mm, G 1/4 ET, 0 - 6 bar
102511	4086	Pressure gauge Ø 63 mm, G 1/4 ET, 0 - 25 bar
137316	580RC1-VS	Set of wearing parts
137119	580FM-EF	Replacement filter element
137321	580FC-ED	Replacement seal
137113	580RM-BW	Mounting bracket
137319	580FC-BMA	Stainless steel container

**Accessories / spare parts for stainless steel filter regulator G 1/2 and G 3/4 (Size 3)**

Art. No.	Type No.	Description
102510	4083	Pressure gauge Ø 63 mm, G 1/4 ET, 0 - 6 bar
102511	4086	Pressure gauge Ø 63 mm, G 1/4 ET, 0 - 25 bar
137317	580RC3-VS	Set of wearing parts
137119	580FM-EF	Replacement filter element
137321	580FC-ED	Replacement seal
137113	580RM-BW	Mounting bracket
137319	580FC-BMA	Stainless steel container

**Accessories / spare parts for stainless steel filter regulator G 1 and G 1 1/2 (Size 4)**

Art. No.	Type No.	Description
102510	4083	Pressure gauge Ø 63 mm, G 1/4 ET, 0 - 6 bar
102511	4086	Pressure gauge Ø 63 mm, G 1/4 ET, 0 - 25 bar
137318	580RC4-VS	Set of wearing parts
137120	580FM4-EF	Replacement filter element
137322	580FC4-ED	Replacement seal
137113	580RM-BW	Mounting bracket
137320	580FC4-BMA	Stainless steel container



4086



580RC3-VS



580FM-EF



580FC-ED



580RM-BW



580FC-BMA